



Kegel Sport Series - TURNPIKE - 2441

Oil Per Board: 40 uL Oil Pattern Distance: 41 Feet Volume Oil Total: 21.48 mL Total Boards Crossed: 537 Boards

Forward Oil Total: 11.84 mL Reverse Oil Total: 9.64 mL
 Forward Boards Crossed: 296 Boards Reverse Boards Crossed: 241 Boards

With the conditioner being applied in a flat manner on the forward travel, and with a little shape created on the journey back towards the foul line, this makes the last third of this pattern very flat. So when bowling on the Turnpike, you better pay strict attention to your direction or you will pay a hefty toll!!

	Start	Stop	Loads	Speed	Crossed	Start	End	Feet	T.Oil
1	2L	2R	8	14	296	0.0	13.8	13.8	11840
2	2L	2R	0	18	0	13.8	31.0	17.2	0
3	2L	2R	0	26	0	31.0	36.0	5.0	0
4	2L	2R	0	30	0	36.0	41.0	5.0	0

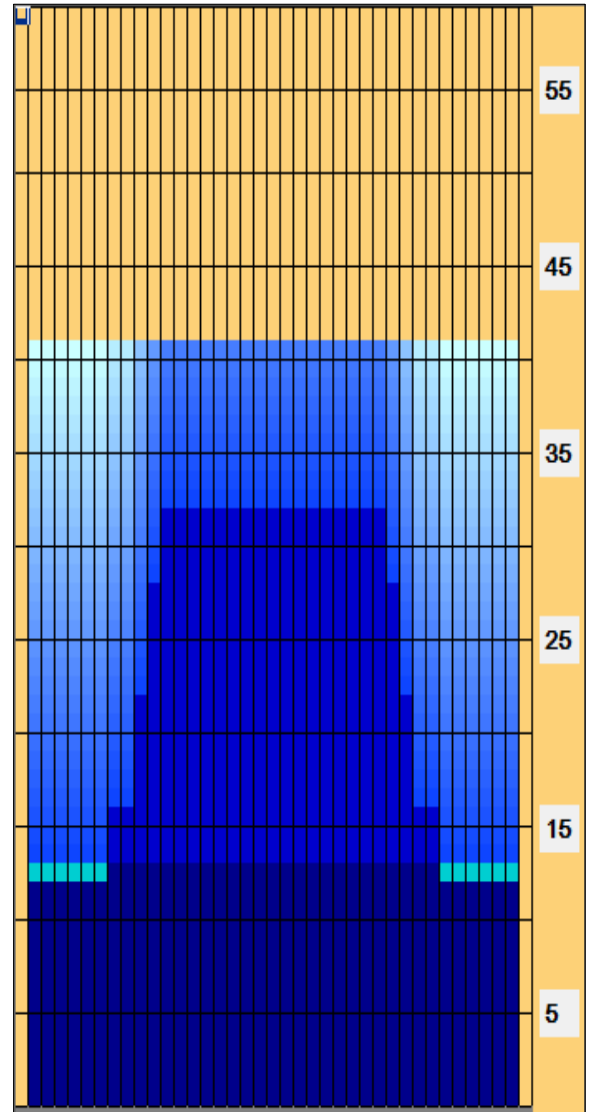
	Start	Stop	Loads	Speed	Crossed	Start	End	Feet	T.Oil
1	2L	2R	0	30	0	41.0	32.0	-9.0	0
2	12L	12R	2	14	34	32.0	28.1	-3.9	1360
3	11L	11R	3	14	57	28.1	22.2	-5.9	2280
4	10L	10R	3	14	63	22.2	16.3	-5.9	2520
5	8L	8R	2	14	50	16.3	12.4	-3.9	2000
6	2L	2R	1	14	37	12.4	10.5	-1.9	1480
7	2L	2R	0	14	0	10.5	0.0	-10.5	0

	Start	Stop	Loads	Speed	Crossed	Start	End	Feet	T.Oil
1	2L	2R	0	30	0	41.0	32.0	-9.0	0
2	12L	12R	2	14	34	32.0	28.1	-3.9	1360
3	11L	11R	3	14	57	28.1	22.2	-5.9	2280
4	10L	10R	3	14	63	22.2	16.3	-5.9	2520
5	8L	8R	2	14	50	16.3	12.4	-3.9	2000
6	2L	2R	1	14	37	12.4	10.5	-1.9	1480
7	2L	2R	0	14	0	10.5	0.0	-10.5	0

Conditioner:
Type In or Select One

TransferType:
Type In or Select One

- Forward
- Reverse
- Combined
- Buff



Arrow Zone Ratios

Item	2-5L:16L-20	6-10L:16:-20	11-15L:16L-20	16L-20:20-16R	16L-20:20-16R	20-16R:15-11R	20-16R:10-6R	20-16R:5-2R
ul Arrow	360	432	744	760	760	744	432	360
Zone Ratio	2.11	1.76	1.02	1	1	1.02	1.76	2.11

Track Zone Ratios

Item	3L-7L:18L-18R	8L-12L:18L-18R	13L-17L:18L-18R	18L-18R:17R-13R	18L-18R:12R-8R	18L-18R:7R-3R
Description	Outside Track:Middle	Middle Track:Middle	Inside Track:Middle	Middle: Inside Track	Middle:Middle Track	Middle:Outside Track
Track Zone Ratio	2.11	1.32	1	1	1.32	2.11

